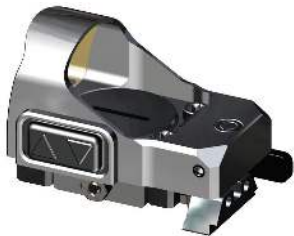




**MEPROLIGHT®**

## **MicroRDS**

**Quick Detach MicroRDS  
with Meprolight TruDot™  
self-illuminated sight**



**USER MANUAL**



## Copyright

Copyright © by MEPROLIGHT.

This document contains information which is the sole proprietary of Meprolight (1990) Ltd.

("MEPROLIGHT"). Disclosure of this document to the recipient does not grant to the recipient any title, rights, licenses or other intellectual property right other than to use the information for the purpose agreed in writing by MEPROLIGHT and the recipient.

The information contained in this document, including technical data, specifications, drawings, product and commercial information etc. may not be duplicated, copied or disclosed, in whole or in part, without prior written permission of MEPROLIGHT.

The Information contained in this document is provided in good faith, however, it is delivered "as is" and no warranty or representation is given or to be implied by MEPROLIGHT as to the completeness, accuracy, merchantability or suitability for any particular purpose of any information or data disclosed hereunder. MEPROLIGHT may change the information contained in this document at its sole discretion without prior notification to the recipient.

---



## Table of Contents

<b>1. System Highlights .....</b>	<b>5</b>
Kit Content .....	6
<b>2. Main Components .....</b>	<b>7</b>
<b>3. Installation and Mounting .....</b>	<b>9</b>
Installing the TruDot™ sight .....	9
Installing the Battery .....	10
Mounting on TruDot™ Sight .....	11
Mounting on a Weapon* .....	13
<b>4. Operation.....</b>	<b>15</b>
Power Up/Down.....	15
Auto Shut Down .....	16
<b>5. Technical Specifications .....</b>	<b>17</b>
<b>6. Warranty.....</b>	<b>19</b>
Important Information .....	20

## List of Figures

Figure 1: Installing the TruDot™ Sight .....	9
Figure 2: Installing the Battery .....	10
Figure 3: Mounting the MicroRDS .....	11
Figure 4: Tension Adjustment Nut .....	12
Figure 5: Mounting the MicroRDS .....	13
Figure 6: Tension Adjustment Nut .....	14
Figure 7: Power Up/Down .....	15

## 1. System Highlights

- Electro-optical red dot sight (MicroRDS) with quick detach mount, on top of a Meprolight TruDot™ self-illuminated sight\*.
- Red dot sight featuring clear aiming dot with 10 adjustable brightness levels.
- Quick and easy battery replacement.
- Multiple configurations to fit various handgun makes and models.

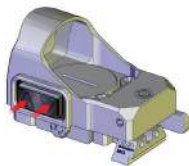
**\*NOTE:** The MicroRDS is also available with an integral Picatinny quick detach mount (without the TruDot™ self-illuminated sight).

## Kit Content

Description	Quantity
MicroRDS Electronic Sight	1
Meprolight TruDot™ self-illuminated sight (optional)	1
CR2032 Battery	1
Wrench for Weapon Adapter's Nuts (optional)	1
User Manual	1



## 2. Main Components



### **ON/OFF Switch**

Click the up ▲ button to power-up the aiming dot. Press on the down ▼ button for four seconds to power-down the aiming dot. Click the up ▲ and down ▼ buttons to toggle between 10 aiming dot illumination levels.



### **Meprolight TruDot™**

Self-luminous, three-dot design in a two-piece construction. Rear sight ready for quick detach mount. Multiple configurations to fit various handgun makes and models.



**Battery Compartment**  
Accepts a single CR2032 battery.



**Zeroing Screws**  
Turn the windage and elevation screws to move the aiming dot 0.9 MOA per click.



**Single Lever Mount**  
Meprolight TruDot™ sight mount

or



Picatinny quick detach mount.

## 3. Installation and Mounting

### Installing the TruDot™ sight

- The Meprolight TruDot™ self-illuminated sight is available in multiple configurations. MEPROLIGHT recommends using a professional gunsmith for installation best suited to your handgun make and model. See figure 1 for an example installation drawing.



Figure 1: Installing the TruDot™ Sight

## Installing the Battery

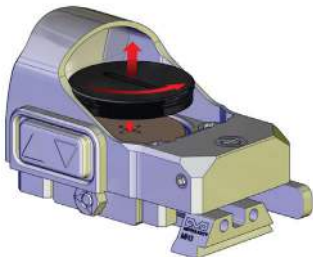


Figure 2: Installing the Battery

- Remove the battery compartment cover.
- Insert a CR2032 Battery into its place, ensuring that the plus ("+") side is up.
- Install the battery compartment cover.

## Mounting on TruDot™ Sight



Figure 3: Mounting the MicroRDS

- Pull the Mount Lever to the open position.
- Position the MicroRDS in its place.
- Push the Mount Lever to the closed position.

- Ensure that the MicroRDS is firmly secured on the Meprolight TruDot™ self-illuminated sight. If the MicroRDS is not firmly secured, adjust the tension adjustment nut (see also figure 4).
- **Caution:** Adjust the nut when the Mount lever is in the open position. Do not use excessive force when tightening the nut.

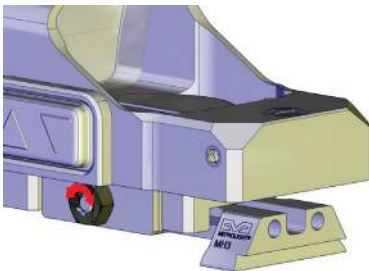


Figure 4: Tension Adjustment Nut

## Mounting on a Weapon\*

**\*NOTE:** For MicroRDS configuration without the TruDot™ self-illuminated sight.

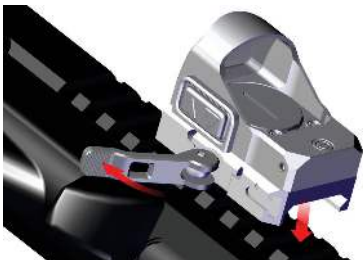


Figure 5: Mounting the MicroRDS

- Pull the Mount Lever to the open position.
- Position the MicroRDS in its place.
- Push the Mount Lever to the closed position.

- Ensure that the MicroRDS is firmly secured on the Meprolight TruDot™ self-illuminated sight. If the MicroRDS is not firmly secured, adjust the tension adjustment nut (see also figure 6).

**Caution:** Adjust the nut when the Mount lever is in the open position. Do not use excessive force when tightening the nut.

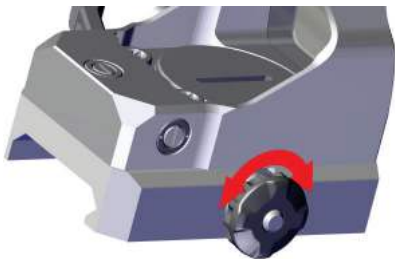


Figure 6: Tension Adjustment Nut



## 4. Operation

### Power Up/Down

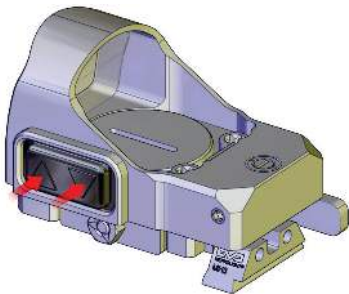


Figure 7: Power Up/Down

- Click the up ▲ button to power-up the aiming dot illumination.

- Click the up ▲ and down ▼ buttons to toggle between 10 aiming dot brightness levels.
- To shut-down the aiming dot illumination, press and hold the down ▼ button for four seconds.

## Auto Shut Down

- When the ON/OFF switch is not pressed for over 8.5 hours, the aiming dot illumination will shut down.
- Click the up ▲ button to power-up.

## 5. Technical Specifications

---

### Red Dot Micro Sight with Quick Detach Mount

Weight (Sight only; including Battery)	38gr (1.34oz.)
Dimensions (LxWxH)	48x33x26mm (1.9"x1.3"x1.4")
Window Size	23x17mm (0.9"x0.7")
Field of View (FOV)	Unlimited
Aiming Dot diameter	3 MOA
Zeroing Knobs	Horizontal & Vertical
Click size	0.9 MOA

Aiming Dot Illumination	10 brightness levels
Battery Type	1 x CR2032
Auto Shut Down	After 8.5 hours without movement
Weapon Mount Configurations	Meprolight TruDot™ sight mount
	Picatinny quick detach mount

### **Meprolight TruDot™ self-illuminated sight**

Operation Time	10 Years
----------------	----------

**NOTE:** Actual values (unless otherwise mentioned) may vary by  $\pm 5\%$ , according to specific configuration.

## 6. Warranty

As a standard warranty policy, MEPROLIGHT warrants its products against defects in materials and workmanship for a period of one year from the date of the original purchase.

Should your product prove to be defective during this period, please deliver it securely packaged in its original container or an equivalent, along with the proof of the original purchase date to your designated point-of-contact.

MEPROLIGHT will repair (or, at its discretion, replace with the same or comparable model) the product or part thereof which, on inspection by MEPROLIGHT, is found to be defective in materials or workmanship.

Warranty period and terms may differ from those described above and are subject to the terms and conditions of the specific sales contract.

## Important Information

MEPROLIGHT is not responsible for warranty service should the product fail as a result of improper maintenance, misuse, abuse, improper installation, neglect, damage caused by disasters (such as fire, flooding, lightning), improper power supply, or service other than by MEPROLIGHT or a party appointed and authorized by MEPROLIGHT to service this product.



Rev. C, Mar. 2019 P/N: 880709000002



**MEPROLIGHT®**

PO Box 26. 4 Ha'Hadas Street,  
Or-Akiva Industrial Park,  
Or-Akiva 3065001, Israel.

Tel: + 972 4 6244111

Fax: + 972 4 6244123

email: [sales@meprolight.com](mailto:sales@meprolight.com)

---